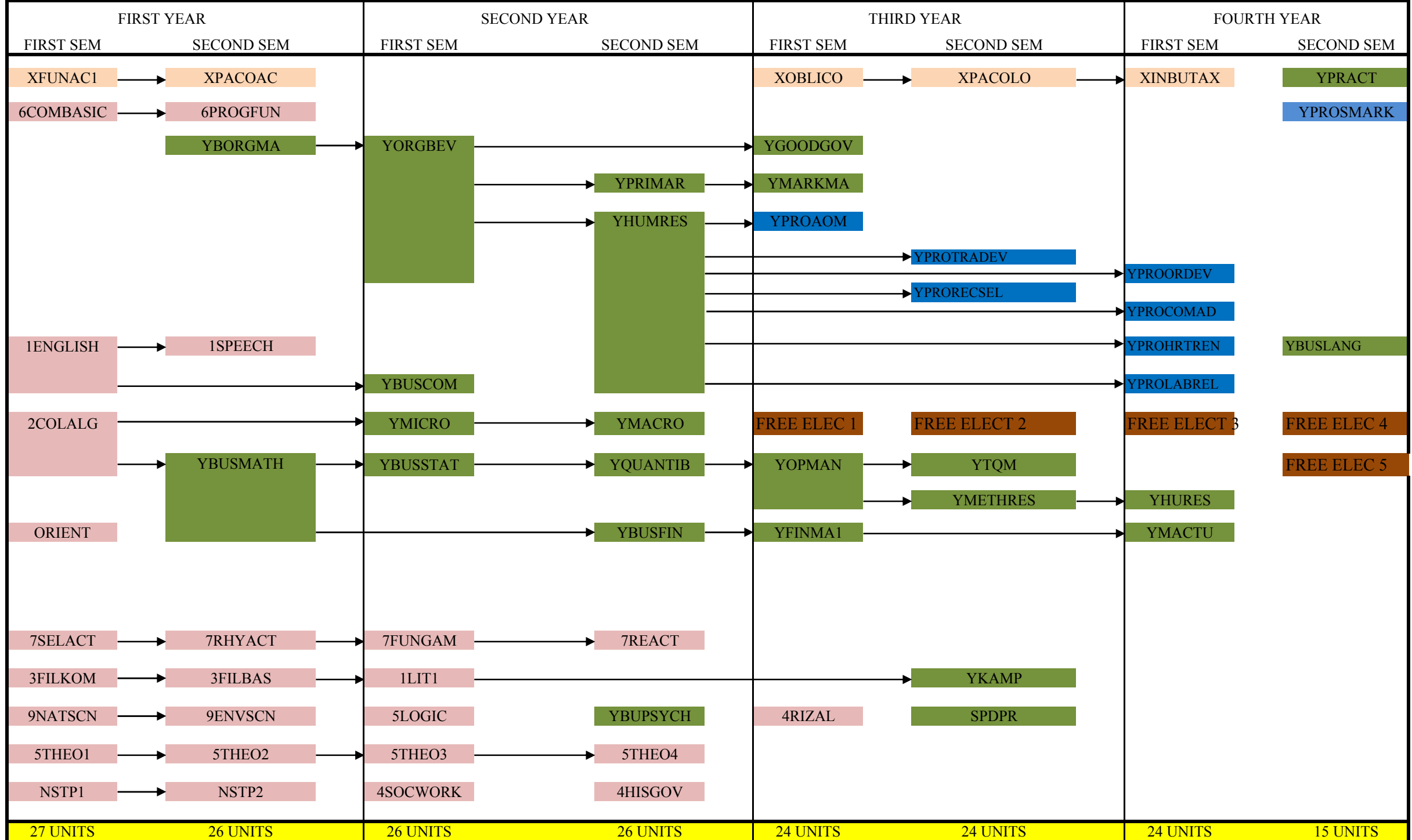


FLOWCHART FOR BACHELOR OF SCIENCE IN BUSINESS ADMINISTRATION, HUMAN RESOURCE DEVELOPMENT MANAGEMENT SY 2010-20111



	ACCOUNTING SUBJECTS
	GEN EDUCATION SUBJECTS
	BASIC MANAGEMENT SUBJECTS

	PROFESSIONAL ELECTIVE SUBJECTS
	FREE ELECTIVE SUBJECTS

FIRST YEAR, FIRST SEMESTER		FIRST YEAR, SECOND SEMESTER	
COURSE CODE	COURSE DESCRIPTION	COURSE CODE	COURSE DESCRIPTION
XFUNAC1	FUNDAMENTALS OF ACCOUNTING	XPACOAC	PARTNERSHIP AND CORPORATION ACCOUNTING
6COMBASIC	COMPUTER BASIC CONCEPTS AND APPLICATION	6PROGFUN	PROGRAMMING FUNDAMENTALS AND DATABASE MANAGEMENT
1ENGLISH	READING AND WRITING	YBUSMATH	BUSINESS MATHEMATICS
2COLALG	COLLEGE ALGEBRA	3FILBAS	PAGBASA AT PAGSULAT SA IBA'T IBANG DISIPLINA
3FILKOM	KOMUNIKASYON SA ACADEMYANG FILIPINO	YBORGMA	BUSINESS ORGANIZATION AND MANGEMENT
9NATSCN	NATURAL SCIENCE	1SPEECH	SPEECH AND ORAL COMMUNICATION
5THEO1	DOING CATHOLIC THEOLOGY FOR TODAY'S FILIPINO	9ENVSCN	ENVIRONMENTAL SCIENCE
7SELECT	SELF-TESTING ACTIVITIES	5THEO2	CHRISTIAN MORAL LIVING OF TODAY'S FILIPINO
5ORIENT	ORIENTATION	7RHYACT	FUNDAMENTALS OF RHYTHMIC ACTIVITIES
NSTP1	NATIONAL SERVICE TRAINING PROGRAM 1	NSTP2	NATIONAL SERVICE TRAINING PROGRAM II
SECOND YEAR, FIRST SEMESTER		SECOND YEAR, SECOND SEMESTER	
COURSE CODE	COURSE DESCRIPTION	COURSE CODE	COURSE DESCRIPTION
4SOCWORK	SOCIOLOGY OF WORK	YQUANTIB	QUANTITATIVE METHODS IN MANAGEMENT (WITH LABORATORY)
5LOGIC	LOGIC	YMACRO	MACROECONOMICS THEORY AND PRACTICE
YORGBEV	ORGANIZATIONAL BEHAVIOR	YHUMRES	HUMAN RESOUCES MANAGEMENT
YBUSCOM	BUSINESS COMMUNICATION	YPRIMAR	PRINCIPLES OF MARKETING
YBUSSTAT	BUSINESS STATISTICS (WITH LABORATORY)	4HISGOV	PHILLIPPINE HISTORY AND GOVERNMENT
5THEO3	A CATHOLIC VIEW OF SEXUALITY, MARRIAGE AND FAMILY LIE	4BUPSYC	BUSINESS PSYCHOLOGY
1LIT1	LITERATURE OF THE PHILIPPINES	YBUSFIN	BASIC BUSINESS FINANCE
YMICRO	MACROECONOMICS THEORY AND PRACTICE	5THEO4	A THEOLOGY OF SOCIAL TRANSFORMANTION FOR THE FILIPINO C/
7FUNGAM	FUNDAMENTALS OF FAMES AND SPORTS	7REACT	RECREATIONAL ACITIVITES

THIRD YEAR, FIRST SEMESTER		THIRD YEAR, SECOND SEMESTER	
COURSE CODE	COURSE DESCRIPTION	COURSE CODE	COURSE DESCRIPTION
YOPMAN	PRODUCTION AND OPERATIONS MANAGEMENT (WITH LABORATORY)	XPACOLO	PARTNERSHIP AND CORPORATION
XOBLICO	OBLIGATIONS AND CONTRACTS	YPROTRADEV	TRAINING AND DEVELOPMENT
YFINMA1	FINANCIAL MANAGEMENT 1	YTQM	TOTAL QUALITY MANGEMENT
4RIZAL	LIFE AND WORKS OF RIZAL	YMETHRES	METHODS OF RESEARCH
YGOODGOV	RESPONSIBLE CITIZENSHIP AND SOCIAL RESPONSIBILITY	YPRORECSEL	RECRUITMENT AND SELECTION
YPROMARKMA	MARKETING MANAGEMENT	YKAMP	KAPAMPANGAN CULTURE
YPROAOM	ADMINISTRATIVE AND OFFICE MANAGEMENT	SPDPR	PERSONALITY DEVELOPMENT AND PUBLIC RELATIONS
FREELECT1	FREE ELECTIVES 1	FREELECT2	FREE ELECTIVES 2
FOURTH YEAR, FIRST SEMESTER		SECOND YEAR, SECOND SEMESTER	
COURSE CODE	COURSE DESCRIPTION	COURSE CODE	COURSE DESCRIPTION
XINBUTAX	INCOME AND BUSINESS TAXATION	YPROSHRM	STRATEGIC HUMAN RESOURCE MANAGEMENT
YMACTU	MANAGEMENT ACCOUNTING	YPRACT	PRACTICUM
YPROORDEV	ORGANIZATIONAL DEVELOPMENT	FREEELECT4	FREE ELECTIVES 4
YHURES	HUMAN RESOURCE RESEARCH	FREEELECT5	FREE ELECTIVES 5
YPROCOMAD	COMPENSATION ADMINISTRATION	YBUSLANG	FOREIGN BUSINESS LANGUAGE
YPROLABREL	LABOR RELATIONS AND ADMINISTRATION		
YPROHRTREN	TRENDS AND ISSUES IN HR		
FREELECTIVE3	FREE ELECTIVES 3		
FREE ELECTIVES			
COURSE CODE	COURSE DESCRIPTION		
YFREWEB	WEB DESIGN		
YFREFFOSBAPP	FREE AND OPEN SOURCE BUSINESS APPLICATIONS		
YFRENTREP	ENTREPRENEURAL MANAGEMENT		
YFREENVIMAN	ENVIRONMENT MANAGEMENT		
YFREPROJMAN	PROJECT MANAGEMENT		
YFREPHIBUS	TRENDS AND ISSUES IN THE PHILIPPINE BUSINESS ENVIRONMENT		

Ms. Flor G. Mangalino
Program Chair

Ms. Maritess M. Dimalanta
Dean

Mr. Jesus D. Panlilio
University Registrar



ATHOLIC

